

A peep into the Victorian Image Collection

Part 9 – The Salvation Army

By Ron Cosens

The carte de visite was rarely seen in the UK before 1860 and the larger cabinet card was introduced in 1866. Portraits on postcards started to be produced from about 1904.

The Salvation Army is a Protestant church and an international charitable organisation headquartered in London with a membership of over 1.7 million. It is established in countries such as America, Canada, Australia, France, Switzerland, India, South Africa, Iceland and Germany.

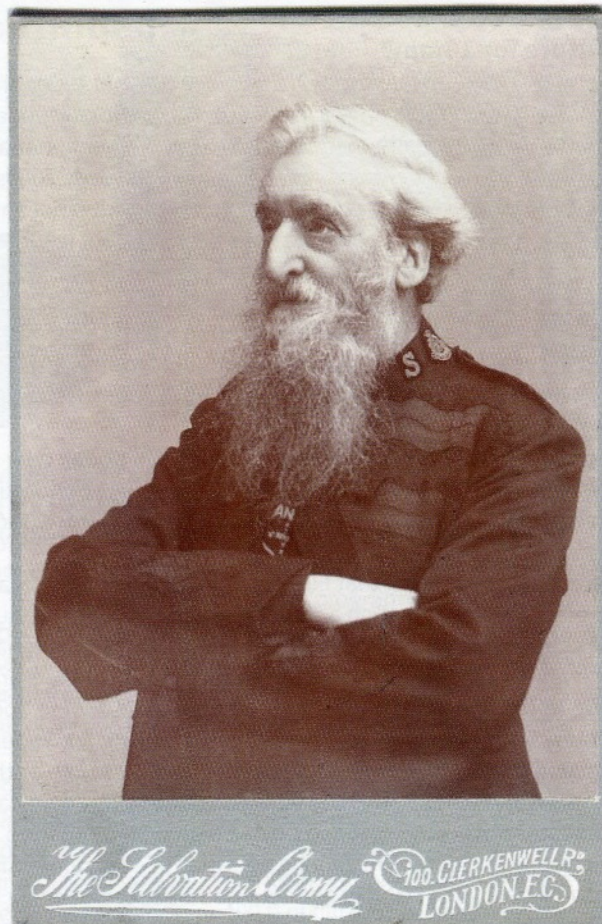
It started on the streets of London by abandoning the traditional concept of a church pulpit and taking God's word directly to the people; to reach the people most in need.

It was founded in 1865 by one-time Methodist preacher William Booth (1829–1912) and his wife Catherine Booth and called the East London Christian Mission.

They preached and practiced a doctrine of practical Christianity — soup, soap and salvation — to encourage social and spiritual transformation among society's most vulnerable and marginalised people.

Their work included setting up shelters for people who were homeless, providing a family tracing service, campaigning to improve working conditions, running soup kitchens, helping people living in the slums and setting up rescue homes for women fleeing domestic abuse and prostitution.

In 1878, Booth re-organised the mission, becoming its first General and introducing the military structure which has been retained as a matter of tradition.



General William Booth

In the early 1890s, the Salvation Army also ran its own photographic studio in London for the public as well as for its members. They also sold many portraits of General Booth and other Salvation Army leaders for promotional purposes and to raise funds for their charity.

The Salvation Army is still very active today and its good work is explained fully at : www.salvationarmy.org.uk

Gallery

All photographs have been dated from studio details.



Two lasses with their tambourines (cdv 1895 Birmingham)



Young lass with S S pin and bonnet (cdv c1902 Clifton)



Two brothers with special pullovers (cdv 1886 Bristol)



'Soldier' with Salvation Army badge and cap (cdv c1906 Belfast)



Ensign Oliver Chalker and family from Wales (cab c1905 Tony Pandy)



Music is an important part of the movement (cab c1899 Newcastle on Tyne)



A proud 'soldier' from Berkshire (cab c1896 Wallingford)



Family with two future recruits? (cab 1901 Hull)



Lady with her Gladstone bag (cab c1900 Unknown location)



Two officers in full dress (cab c1906 Bury St. Edmunds)



Irish youngster dressed ready for duty (cdv c1886 Dublin)

A wonderful postcard of a Salvation Army band (pc 1926 Horsforth)



You can find more of these wonderful images on the dedicated page on the PCCGB website:
<https://bit.ly/3NZ8yDx>

further images and information:
ron.cosens@btinternet.com
 or www.cartedeviseite.co.uk